



Material Handling

Tires | Tubes | Wheels



***Making Customers'
Lives Easier™***



OTR Engineered Solutions (OTR)

is your global partner for high-quality off-the-road tires, wheels, assemblies, and accessories. We are proud to supply end-user customers, dealers, and original equipment manufacturers with engineered solutions to meet and exceed common – and uncommon – challenges in such core markets as Agriculture, Construction, Forestry, Industrial, Lawn & Garden, Material Handling, Mining, Powersports, and Specialty Vehicles. But our success is much more than the products we offer. We're a multinational enterprise with more than 1,400 employees throughout 30+ facilities worldwide dedicated to supporting you with a full range of high-level services.

Material Handling

OTR's product lineup for material handling vehicles is the result of many years of experience, innovations, and a hands-on approach that ensures our products get the job done. Whether you are focused on safety, vehicle productivity, utilization, or value, OTR's team will help you find the right solution.



Table of Contents

Tires

SOLID PRESS-ON.....	6-7
SOLID RESILIENT.....	8-9
FORKBOSS ND229	10
GSE	10
MUDSHARK	11
R4 HD.....	11
TRACTION MASTER	12
SANDSTORM	12
SAND MASTER	13

Tubes	14
--------------------	----

Wheels

MATERIAL HANDLING WHEELS.....	15
TRUCK-MOUNTED FORKLIFT WHEELS	16

Services

TyrLyner®.....	18
Custom Solutions	18
Tire/Wheel Exchange & Foam-Fill	19

Information & Disclaimers	20-21
--	-------

Tires

Quick Reference Guide



SOLID PRESS-ON

6-7



SOLID RESILIENT

8-9



FORKBOSS ND229

10



GSE

10



MUDSHARK

1



R4 HD

11



TRACTION MASTER

12



SANDSTORM

12



SAND MASTER

13



TyrLyner®

OTR's proprietary rubber urethane coating that provides a "self-healing" response to cuts and punctures. See page 18 for more details.

Available for:

- GSE
- R4 HD
- SANDSTORM
- MUDSHARK
- TRACTION MASTER
- SAND MASTER



SOLID PRESS-ON

SOLID PRESS-ON tires are available in multiple sizes to fit a wide range of lift trucks. These extremely tough puncture-proof tires are designed to carry heavy loads with exceptional stability. A lower profile tire than comparable sized pneumatics, this option creates a tighter turn radius, making them ideal for indoor applications. Available in smooth or traction tread styles with black or non-marking rubber.



Tire Size	Overall Diameter	Section Width	Load Wheels Load Capacity	Steer Wheels Load Capacity	Load Capacity	Smooth Part Number	Traction Part Number
	IN (MM)	IN (MM)	LBS@MPH (KG@KM/H)	LBS@MPH (KG@KM/H)	LBS@MPH (KG@KM/H)		
			COUNTER-BALANCED LIFT TRUCKS		OTHER VEHICLES		
10 X 4 X 6-1/2	10.00 (254.0)	4.00 (101.6)	1,532@10 (694.9@16.1)	1,290@10 (585.1@16.1)	1,224@10 (555.2@16.1)	TS25610465*	TS25710465*
10 X 4-3/4 X 6-1/2	10.00 (254.0)	4.75 (120.7)	1,863@10 (845.0@16.1)	1,566@10 (710.3@16.1)	1,488@10 (674.9@16.1)	TS2561047565*	TS2571047565*
10 X 5 X 6-1/2	10.00 (254.0)	5.00 (127.0)	1,996@10 (905.4@16.1)	1,676@10 (760.2@16.1)	1,599@10 (725.3@16.1)	TS25610565*	TS25710565*
12 X 4-1/2 X 8	12.00 (304.8)	4.50 (114.3)	2,040@10 (925.3@16.1)	1,720@10 (780.2@16.1)	1,643@10 (745.3@16.1)	TS25612458*	TS25712458*
12 X 5-1/2 X 8	12.00 (304.8)	5.50 (139.7)	2,448@10 (1,110.4@16.1)	2,073@10 (940.3@16.1)	1,985@10 (900.4@16.1)	TS25612558*	TS25712558*
13-1/2 X 5-1/2 X 8	13.50 (342.9)	5.50 (139.7)	2,966@10 (1,345.4@16.1)	2,492@10 (1,130.4@16.1)	2,381@10 (1,080.0@16.1)	TS256135558*	TS257135558*
14 X 4-1/2 X 8	14.00 (355.6)	4.50 (114.3)	2,304@10 (1,045.1@16.1)	1,929@10 (875.0@16.1)	1,830@10 (830.1@16.1)	TS25614458*	TS25714458*
14 X 5 X 10	14.00 (355.6)	5.00 (127.0)	2,635@10 (1,195.2@16.1)	2,205@10 (1,000.2@16.1)	2,106@10 (955.3@16.1)	TS25614510*	TS25714510*
15 X 5 X 11-1/4	15.00 (381.0)	5.00 (127.0)	2,734@10 (1,240.1)	2,293@10 (1,040.1@16.1)	2,183@10 (990.2@16.1)	TS2561551125*	TS2571551125*
16 X 5 X 10-1/2	16.00 (406.4)	5.00 (127.0)	2,966@10 (1,345.4@16.1)	2,492@10 (1,130.4@16.1)	2,381@10 (1,080.0@16.1)	TS256165105*	TS257165105*
16 X 6 X 10-1/2	16.00 (406.4)	6.00 (152.4)	3,771@10 (1,710.5@16.1)	3,164@10 (1,435.2@16.1)	2,999@10 (1,360.3@16.1)	TS256166105*	TS257166105*
16 X 7 X 10-1/2	16.00 (406.4)	7.00 (177.8)	4,564@10 (2,070.2@16.1)	3,837@10 (1,740.4@16.1)	3,660@10 (1,660.1@16.1)	TS256167105*	TS257167105*
16 X 8.66 X 12	16.00 (406.4)	8.66 (220.0)	5,435@10 (2,465.3@16.1)	4,564@10 (2,070.2@16.1)	4,344@10 (1,970.4@16.1)	TS2561686612*	TS2571686612*
16-1/4 X 5 X 11-1/4	16.25 (412.8)	5.00 (127.0)	2,999@10 (1,360.3@16.1)	2,525@10 (1,145.3@16.1)	2,403@10 (1,090.0@16.1)	TS256162551125*	TS257162551125*
16-1/4 X 6 X 11-1/4	16.25 (412.8)	6.00 (152.4)	3,782@10 (1,715.5@16.1)	3,175@10 (1,440.2@16.1)	3,021@10 (1,370.3@16.1)	TS256166105*	TS257162561125*
16-1/4 X 7 X 11-1/4	16.25 (412.8)	7.00 (177.8)	4,542@10 (2,060.2@16.1)	3,826@10 (1,735.4@16.1)	3,638@10 (1,650.2@16.1)	TS256162571125*	TS257162571125*
18 X 5 X 12-1/8	18.00 (457.2)	5.00 (127.0)	3,241@10 (1,470.1@16.1)	2,712@10 (1,230.1@16.1)	2,580@10 (1,170.3@16.1)	TS25618512125*	TS25718512125*

SOLID PRESS-ON CONTINUED

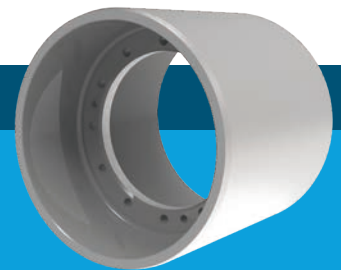


Tire Size	Overall Diameter	Section Width	Load Wheels Load Capacity	Steer Wheels Load Capacity	Load Capacity	Smooth Part Number	Traction Part Number
	IN (MM)	IN (MM)	LBS@MPH (KG@KM/H)	LBS@MPH (KG@KM/H)	LBS@MPH (KG@KM/H)		
SOLID PRESS-ON TIRES CONTINUED							
			COUNTER-BALANCED LIFT TRUCKS		OTHER VEHICLES		
18 X 6 X 12-1/8	18.00 (457.2)	6.00 (152.4)	4,123@10 (1,870.2@16.1)	3,473@10 (1,575.3@16.1)	3,308@10 (1,500.5@16.1)	TS25618612125*	TS25718612125*
18 X 7 X 12-1/8	18.00 (457.2)	7.00 (177.8)	5,027@10 (2,280.2@16.1)	4,212@10 (1,910.5@16.1)	4,013@10 (1,820.3@16.1)	TS25618712125*	TS25718712125*
18 X 8 X 12-1/8	18.00 (457.2)	8.00 (203.2)	5,909@10 (2,680.3@16.1)	4,961@10 (2,250.3@16.1)	4,741@10 (2,150.5@16.1)	TS25618812125*	TS25718812125*
21 X 6 X 15	21.00 (533.4)	6.00 (152.4)	4,631@10 (2,100.6@16.1)	3,892@10 (1,765.4@16.1)	3,704@10 (1,680.1@16.1)	TS25621715*	TS25721715*
21 X 7 X 15	21.00 (533.4)	7.00 (177.8)	5,645@10 (2,560.5@16.1)	4,741@10 (2,150.5@16.1)	4,520@10 (2,050.2@16.1)	TS25621615*	TS25721615*
21 X 8 X 15	21.00 (533.4)	8.00 (203.2)	6,670@10 (3,025.5@16.1)	5,601@10 (2,540.6@16.1)	5,347@10 (2,425.4@16.1)	TS25621815*	TS25721815*
21 X 9 X 15	21.00 (533.4)	9.00 (228.6)	7,662@10 (3,475.4@16.1)	6,439@10 (2,920.7@16.1)	6,119@10 (2,775.5@16.1)	TS25621915*	TS25721915*
22 X 8 X 16	22.00 (558.8)	8.00 (203.2)	6,902@10 (3,130.7@16.1)	5,788@10 (2,625.4@16.1)	5,513@10 (2,500.7@16.1)	TS25622816*	TS25722816*
22 X 9 X 16	22.00 (558.8)	9.00 (228.6)	7,938@10 (3,600.6@16.1)	6,670@10 (3,025.5@16.1)	6,339@10 (2,875.3@16.1)	TS25622916*	TS25722916*
22 X 10 X 16	22.00 (558.8)	10.00 (254.0)	8,996@10 (4,080.5@16.1)	7,552@10 (3,425.5@16.1)	7,166@10 (3,250.4@16.1)	TS256221016*	TS257221016*
22 X 12 X 16	22.00 (558.8)	12.00 (304.8)	1,1091@10 (5,030.8@16.1)	9,316@10 (4,225.7@16.1)	8,875@10 (4,025.6@16.1)	TS256221216*	TS257221216*
28 X 12 X 22	28.00 (711.2)	12.00 (304.8)	13,274@10 (6,021.0@16.1)	11,157@10 (5,060.7@16.1)	10,628@10 (4,820.8@16.1)	TS256281222*	TS257281222*

*Non-marking available.

HUBS AVAILABLE

Beyond standard wheel assemblies, OTR also offers heavy-duty hubs for puncture-free solid press-on tires. These are made to suit. Ideal for indoor applications, such as forklifts.





SOLID RESILIENT

SOLID RESILIENT tires offer the puncture-proof durability of solid press-on tires, but with more of the smooth ride characteristics of a pneumatic tire. These are commonly used both indoors or out, especially in applications where debris and puncture hazards are present. Sizes are available for the most popular lift truck options. As with our Solid Press-On Tires, these tires are available with smooth or traction tread styles and with black or non-marking rubber.



Tire Size	Overall Diameter	Section Width	Max Overall Width	Rim Size	Load Wheel Load Capacity	Steer Wheel Load Capacity	Load Capacity	Smooth Part Number	Clip Rock Part Number
	IN (MM)	IN (MM)	IN (MM)	IN (MM)	LBS@MPH (KG@KM/H)	LBS@MPH (KG@KM/H)	LBS@MPH (KG@KM/H)		
					COUNTER-BALANCED LIFT TRUCKS		OTHER VEHICLES		
4.00X8	16.1 (408.9)	3.7 (94.0)	4.5 (114.3)	3.00D - 8	2,094@16 (949.8@25.7)	1,609@16 (729.8@25.7)	1,609@16 (729.8@25.7)	TS2554008*	TSL2554008*
140/55-9	14.9 (378.5)	4.2 (106.7)	5.0 (127.0)	4.00E - 9	2,579@16 (1,169.8@25.7)	1,984@16 (899.9@25.7)	1,984@16 (899.9@25.7)	TS255140559*	TSL255140559*
5.00X8	18.0 (457.2)	3.9 (99.1)	4.8 (121.9)	3.00D - 8	3,120@16 (1,415.2@25.7)	2,403@16 (1,090.0@25.7)	2,403@16 (1,090.0@25.7)	TS25550083008*	TSL25550083008*
5.00X8	18.0 (457.2)	3.9 (99.1)	4.8 (121.9)	3.25I - 8	3,120@16 (1,415.2@25.7)	2,403@16 (1,090.0@25.7)	2,403@16 (1,090.0@25.7)	TS25550083258*	TSL25550083258*
15X4.5-8	15.0 (381.0)	3.5 (88.9)	4.2 (106.7)	3.00D - 8	2,293@16 (1,040.1@25.7)	1,764@16 (800.1@25.7)	1,764@16 (800.1@25.7)	TS25515458*	TSL25515458*
16X6-8	16.5 (419.1)	4.7 (119.4)	5.6 (142.2)	4.33R - 8	3,296@16 (1,495.0@25.7)	2,535@16 (1,149.9@25.7)	2,535@16 (1,149.9@25.7)	TS2551668*	TSL2551668*
18X7-8	17.8 (452.1)	5.0 (127.0)	6.1 (154.9)	4.33R - 8	4,729@16 (2,145.0@25.7)	3,638@16 (1,650.2@25.7)	3,638@16 (1,650.2@25.7)	TS2551878*	TSL2551878*
6.00-9	20.8 (528.3)	4.3 (109.2)	5.5 (139.7)	4.00E - 09	4,156@16 (1,885.1@25.7)	3,197@16 (1,450.1@25.7)	3,197@16 (1,450.1@25.7)	TS2556009*	TSL2556009*
21X8-9	20.7 (525.8)	6.0 (152.4)	7.2 (182.9)	6.00E - 09	6,074@16 (2,755.1@25.7)	4,674@16 (2,120.1@25.7)	4,674@16 (2,120.1@25.7)	TS2552189*	TSL2552189*
6.50X10	22.7 (576.6)	5.1 (129.5)	6.3 (160.0)	5.00F - 10	5,159@16 (2,340.1@25.7)	3,968@16 (1,799.9@25.7)	3,968@16 (1,799.9@25.7)	TS25565010*	TSL25565010*
200/50-10	18.0 (457.2)	6.1 (154.9)	7.3 (185.4)	6.50F - 10	5,445@16 (2,469.8@25.7)	4,189@16 (1,900.1@25.7)	4,189@16 (1,900.1@25.7)	TS2552005010*	TSL2552005010*
23X9-10	23.1 (586.7)	6.5 (165.1)	7.8 (198.1)	6.50F - 10	7,595@16 (3,445.0@25.7)	5,842@16 (2,649.9@25.7)	5,842@16 (2,649.9@25.7)	TS25523910*	TSL25523910*
7.00X12	25.7 (652.8)	5.4 (137.2)	6.9 (175.3)	5.00S - 12	6,437@16 (2,919.8@25.7)	4,938@16 (2,239.8@25.7)	4,938@16 (2,239.8@25.7)	TS25570012*	TSL25570012*
7.00X15	28.4 (721.4)	5.5 (139.7)	7.0 (177.8)	5.5 - 15	7,815@16 (3,544.8@25.7)	6,008@16 (2,725.2@25.7)	6,008@16 (2,725.2@25.7)	TS25570015*	TSL25570015*
27X10-12	26.4 (670.6)	8.0 (203.2)	9.4 (238.8)	8.00G - 12	8,598@16 (3,900.0@25.7)	6,614@16 (3,000.1@25.7)	6,614@16 (3,000.1@25.7)	TS255271012*	TSL255271012*
28X9-15	26.9 (683.3)	7.4 (188.0)	8.6 (218.4)	7.00 - 15	8,598@16 (3,900.0@25.7)	6,614@16 (3,000.1@25.7)	6,614@16 (3,000.1@25.7)	TS25528915*	TSL25528915*

SOLID RESILIENT CONTINUED



Tire Size	Overall Diameter	Section Width	Max Overall Width	Rim Size	Load Wheel Load Capacity	Steer Wheel Load Capacity	Load Capacity	Smooth Part Number	Clip Rock Part Number
	IN (MM)	IN (MM)	IN (MM)	IN (MM)	LBS@MPH (KG@KM/H)	LBS@MPH (KG@KM/H)	LBS@MPH (KG@KM/H)		
SOLID RESILIENT TIRES CONTINUED									
					COUNTER-BALANCED LIFT TRUCKS		OTHER VEHICLES		
28X12.5-15	28.0 (711.2)	10.6 (269.2)	11.6 (294.6)	9.75 - 15	12,181@16 (5,525.2@25.7)	9,370@16 (4,250.2@25.7)	9,370@16 (4,250.2@25.7)	TS2552812515*	TSL2552812515*
250-15	28.4 (721.4)	7.2 (182.9)	8.7 (221.0)	7.00 - 15	10,461@16 (4,745.0@25.7)	8,047@16 (3,650.1@25.7)	8,047@16 (3,650.1@25.7)	TS255250157*	TSL255250157*
250-15	28.4 (721.4)	7.2 (182.9)	8.7 (221.0)	7.50 - 15	10,461@16 (4,745.0@25.7)	8,047@16 (3,650.1@25.7)	8,047@16 (3,650.1@25.7)	TS2552501575*	TSL2552501575*
8.25X15	32.3 (820.4)	6.4 (162.6)	8.1 (205.7)	6.5 - 15	10,472@16 (4,750.0@25.7)	8,047@16 (3,650.1@25.7)	8,047@16 (3,650.1@25.7)	TS25582515*	TSL25582515*
300X15	32.2 (817.9)	8.4 (213.4)	10.0 (254.0)	8.00 - 15	12,897@16 (5,850.0@25.7)	9,921@16 (4,500.1@25.7)	9,921@16 (4,500.1@25.7)	TS25530015*	TSL25530015*
23X10-12	22.9 (581.7)	8.1 (205.7)	9.4 (238.8)	8.00G - 12	8,311@16 (3,769.8@25.7)	6,393@16 (2,899.8@25.7)	6,393@16 (2,899.8@25.7)	TS255231012*	TSL255231012*
10.00X20	40.2 (1,021.1)	9.9 (251.5)	11.2 (284.5)	8.0 - 20	13,228@16 (6,000.1@25.7)	11,023@16 (4,999.9@25.7)	11,023@16 (4,999.9@25.7)	TS2551000208*	

*Non-marking available.



FORKBOSS ND229

FORKBOSS-ND229 is an ultra-heavy-duty, non-directional tire featuring deep lugs, a reinforced sidewall, rim guard, and enlarged bead for tough industrial applications. The 12LL610 HBR design eliminates hub clearance issues.



Tire Size	Ply	Rated Pressure	Overall Diameter	Section Width	Rim Size	Load Capacity		Part Number
		PSI (KPA)	IN (MM)	IN (MM)	IN	LBS@MPH (KG@KM/H)	LBS@MPH (KG@KM/H)	
						LOAD WHEEL	STEER WHEEL	
8.25-15	18	145 (1,000)	33.7 (856)	9.1 (231)	15 X 6.50	8,445@15 (3,830@25)	7,135@15 (3,235@25)	T2291882515
10.00-20	18	145 (1,000)	43.7 (1,110)	11.7 (297)	20 X 7.50	13,420@15 (6,090@25)	11,300@15 (5,125@25)	T22918100020
12.00-20	28	145 (1,000)	46.4 (1,177)	13.2 (336)	20 X 8.00	18,145@15 (8,230@25)	15,335@15 (6,960@25)	T22928120020HD
12LL610	28	145 (1,000)	46.7 (1,186)	12.9 (328)	24 X 8.50	18,145@15 (8,230@25)	15,335@15 (6,960@25)	T2292812LL610

GSE

GSE is a deep ribbed tire with shoulder notches that improve grip when turning on hard surfaces or soft ground. Heavy-duty construction and reinforced sidewalls ensure long life and protection from cuts and punctures.



Tire Size	Ply	Rated Pressure	Overall Diameter	Section Width	Rim Size	Load Capacity	Part Number
		PSI (KPA)	IN (MM)	IN (MM)	IN	LBS@MPH (KG@KM/H)	
4.00-8	8	130 (900)	16.7 (424)	5.0 (127)	8 X 3.75	1,480@15 (670@25)	T131084008
6.00-9	10	125 (860)	22.1 (561)	7 (178)	9 X 4.00	2,820@5 (1,280@10)	T131106009TT
6.50-10	10	115 (790)	24 (610)	7.8 (197)	10 X 5.00	3,330@5 (1,510@10)	T1311065010TT
6.50-10	12	140 (965)	24 (610)	7.8 (197)	10 X 5.00	3,600@5 (1,630@10)	T1311265210TT
8.00-16.5	8	75 (520)	28.6 (726)	8.06 (205)	16.5 X 6.75	3,600@5 (1,630@10)	T13108800165
8.75-16.5	10	70 (480)	30.24 (767)	9.13 (231)	16.5 X 6.75	3,620@5 (1,640@10)	T13110875165

MUDSHARK

The MUDSHARK HF3 model features deep lugs, which improves traction and cleaning. It's cut and puncture resistant with a rim guard for sidewall protection. An HBR option is available to provide a shortened sidewall for better grip and handling on soft ground. When faced with more rough environments, the MUDSHARK R4 model delivers even more rugged construction than the HF3, while maintaining the deep lugs and self-cleaning aspects for maximum traction.



Tire Size	Ply	Rated Pressure	Overall Diameter	Section Width	Rim Size	Load Capacity	Part Number
		PSI (KPA)	IN (MM)	IN (MM)	IN (MM)	LBS@MPH (KG@KM/H)	
HF3							
31X15.50-15	10	60 (415)	30.8 (782.3)	TBA	15 X 13.00 LB	4,225@5 (1,920@10)	T5103115515M
R4							
31.5X13.00-16.5	10	70 (480)	32.2 (818)	12.6 (320)	16.5 X 9.75	5,370@10 (2,440@15)	T181103151300165

R4 HD

R4 HD is a multi-purpose tire with a deep lug design and tread pattern designed to balance traction with off-road and hard-surface performance. It's ultra-durable, with a rim guard to protect the wheel.



Tire Size	Ply	Rated Pressure	Overall Diameter	Section Width	Rim Size	Load Capacity	Part Number
		PSI (KPA)	IN (MM)	IN (MM)	IN	LBS@MPH (KG@KM/H)	
31X15.50-15	12	75 (520)	31.2 (792)	14.45 (367)	15 X 13.00 LB	4,940@10 (2,240@15)	T1211231155015



TRACTION MASTER

TRACTION MASTER features deep, flat, layered lugs for superior grip and handling on soft ground, with extra-wide shoulders and rim guards for protection against side impact. It's cut and puncture resistant with a design that is self-cleaning.



Tire Size	Ply	Rated Pressure	Overall Diameter	Section Width	Rim Size	Load Capacity	Part Number
		PSI (KPA)	IN (MM)	IN (MM)	IN	LBS@MPH (KG@KM/H)	
29X12.5-15	8	40 (280)	28.95 (735.3)	12.45 (316.2)	15 X 10.00	1,980@10 (890@15)	T13082912515
29X12.5-15	10	50 (340)	28.95 (735.3)	12.45 (316.2)	15 X 10.00	2,270@30 (1,030@50)	T13102912515
31X15.50-15	8	45 (310)	31.06 (788.9)	14.33 (364.0)	15 X 13.00	3,085@10 (1,400@15)	T130831155015
31X15.50-15	10	65 (450)	31.03 (788.2)	14.31 (363.5)	15 X 13.00	3,645@10 (1,650@15)	T131031155015

SANDSTORM

SANDSTORM balances excellent wear and flotation characteristics for operating on hard surfaces and off-road – the ideal combination for 3-wheel forklifts requiring long life, stability, and traction.



Tire Size	Ply	Rated Pressure	Overall Diameter	Section Width	Rim Size	Load Capacity	Part Number
		PSI (KPA)	IN (MM)	IN (MM)	IN	LBS@MPH (KG@KM/H)	
31X15.50-15	8	55 (380)	30.5 (775)	14.63 (372)	15 X 13.00 LB	3,085@10 (1,400@15)	T1420831155015
31X15.50-15	12	55 (380)	30.5 (775)	14.63 (372)	15 X 13.00 LB	3,645@10 (1,650@15)	T1421231155015

SAND MASTER

SAND MASTER offers exceptional traction on a variety of surfaces, especially soft ground where stability is critical. Compact, grooved lugs channel water away, improving grip on wet ground – a feature especially useful in maneuvering loads outside.



Tire Size	Ply	Rated Pressure	Overall Diameter	Section Width	Rim Size	Load Capacity	Part Number
		PSI (KPA)	IN (MM)	IN (MM)	IN	LBS@MPH (KG@KM/H)	
36X18LL625	14	75 (520)	36.3 (922)	18.0 (457)	24.5 X 15.00	14,300@5 (6,500@10)	T11143618625
41X18LL22.5	14	50 (350)	42 (1,067)	19.7 (501)	22.5 X 14.00	9,200@10 (4,175@15)	T11144118225
41X18LL22.5	20	80 (550)	42 (1,067)	19.7 (501)	22.5 X 14.00	14,800@10 (6,700@15)	T1120118225
50X15.00-28	12	65 (450)	49.7 (1,261)	15.1 (384)	28 X 12.00 GR	13,600@5 (6,170@10)	T111250150028
50X18.00-28	12	65 (450)	50.2 (1,275)	18.2 (462)	28 X 15.00 GR	17,600@5 (7,980@10)	T111250180028

Tubes



TRANS AMERICAN RUBBER

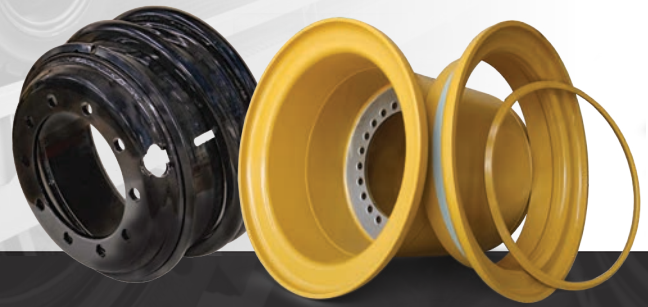


OTR's TRANS AMERICAN RUBBER tubes feature 100% butyl rubber for a premium tube solution. Tubes extend tire life, prevent air leakage, and add weight for improved traction. Butyl provides the following distinct advantages:

- Improved shock absorption and ride comfort.
- Excellent weatherability; resistant to heat, moisture, and chemical attack.
- Durability; resistant to flexing, abrasion, and tearing.

Tube Size	Valve	Box Quantity	Part Number
6.00-9	TR13	20	9I40NB
6.00/6.90R9	JS2	20	9I50NB
6.00/6.90R9	TR150A	20	9I52NB
6.00/6.90R9	TR75A	20	9I54NB
6.50/7.50R10	JS2	20	9I59NB
6.50/7.50R10	TR150A	10	9I60NB
6.50/7.50R10	TR75A	10	9I64NB
7.00R12	TR75A	10	9I66NB
9.00R10	TR75A	10	9I67NB
27X815/850R15	TR75A	10	9I69NB
27X8.15/8.50R15 OFF CENTER	TR15	10	9I71NB
28X9.00R15 CENTER	TR75A	10	9I75NB
250R15	TR75A	10	9I80NB
300R15	TR75A	10	9I82NB
32X12R15	TR75A	8	9I86

Wheels



OTR offers 3- and 5-piece steel wheels for heavy-duty lift trucks, reach stackers, cargo handling vehicles, and gantry cranes, plus single-piece units for 3-wheel lift trucks (available in 6-, 10- and 11-hole patterns). Material handling wheels are 10-BAR, FMVSS 120/SAE J179, TRA, and ETRTO compliant, and rated for ultra-heavy loads, making them a preferred choice for OEMs.

MATERIAL HANDLING WHEELS

Wheel Size	Fits Tire Size	Part Number
12X10.5	26X12.00-12	12105054
12X10.5	26X12.00-12	W12105032
12X7	23X8.50-12	W127025
15X10	26X12D380	1510008
15X10	26X12D380	W1510029
15X10	26/12D380	W1510019
15X13	31/15.50-15	1513010
15X13	31/15.50-15	15X13W010
15X13	31/15.50-15	1513020
15X7	TBA	W157011
15X8	TBA	W158015
16.5X9.75	12/16.5	165975120
16.5X9.75	31.5X13.00-16.5	165975106

Contact your sales representative for specifications.



TRUCK-MOUNTED FORKLIFT WHEELS

With rim sizes from 12 to 16.5 inches, OTR TRUCK-MOUNTED FORKLIFT WHEELS are available in 3- and 5-piece designs for heavy-duty lift trucks, reach stackers, cargo handling vehicles, and gantry cranes. There is also a 1-piece design for 3-wheel lift trucks. Constructed of High-Strength Low-Alloy (HSLA) grade steel, these wheels are 10-BAR, SAE J179, TRA, and ETRTO compliant, and rated for ultra-heavy loads, making them a preferred choice for OEMs.



Wheel Size	Fits Tire Size	Bolt Holes	Bolt Hole Circle IN (MM)	Pilot Hole IN (MM)	Countersink	Part Number
12X7	23X8.50-12	5	4.5 (114.3)	3.15 (80)	NO	W127025
12X10.5	26X12.00-12	5	4.5 (114.3)	3.15 (80)	NO	W12105032
15X10	26X12D380	6	5.50 (139.7)	4.250 (108)	YES	W1510019
15X10	26X12D380	6	5.50 (139.7)	4.292 (109)	YES	W1510029
12X10.5	26X12.00-12	5	4.5 (114.3)	3.15 (80)	YES	12105054
15X10.10	26X12D380	10	5.51 (140)	3.68 (93.5)	NO	1510008
15X13	31X15.50-15	10	5.51 (140)	3.68 (93.5)	NO	1513010
15X13	31X15.50-15	11	5.315 (135)	3.94 (100)	YES	1513020
15X13	31X15.50-15	11	5.315 (135)	3.94 (100)	YES	15X13W010
16.5X9.75	12-16.5	10	5.51 (140)	3.68 (93.5)	NO	165975120
16.5X9.75	10-16.5	10	5.51 (140)	3.68 (93.5)	NO	W165825085
16.5X9.75	12-16.5	10	5.51 (140)	3.68 (93.5)	NO	165975105
16.5X9.75	31.5X13.00-16.5	10	5.51 (140)	3.68 (93.5)	NO	165975106



TyrLyner®

OTR's proprietary rubber urethane coating that provides a "self-healing" response to cuts and punctures. See page 18 for more details.

Material Handling **Wheels**



Services



TyrLyner®

TyrLyner® is a proprietary rubber urethane securely applied to the inside of a tire's casing to extend life and enhance safe operation. Its "self-healing" technology ensures the tire is sealed when punctured or cut by objects up to ¼-inch diameter. The coating is applied at an OTR facility for OEMs and distributors who support fleets and owner-operators engaged in construction work, where downtime is NOT an option.



CUSTOM SOLUTIONS

OTR can develop custom solid tires for select material handling vehicles. Our brand—SOLIDBOSS®—is the preeminent brand in solid tires, preferred by OEMs and specified as original equipment for telehandlers, skid-steers, and other vehicles. These tires are not only tough and long-lasting, they also use apertures to absorb shock and cushion the ride for the operator, contributing to less fatigue on the operator and machine. Premium rubber compounds, ultra-deep and ultra-wide lugs, and reinforced sidewalls combine with solid tire construction to deliver a robust flat-prevention solution for fleets and owner-operators who cannot afford downtime.

Contact your OTR Account Manager

for other excellent opportunities on our SolidBoss assemblies, Trans American Rubber Tube Program, Skid Loader Wheels, Backhoe Wheels, Telehandler Wheels, and Foam-Filled Tire & Wheel Exchange Program.



TIRE/WHEEL EXCHANGE & FOAM-FILL

OTR offers a foam-fill and wheel exchange program to qualified dealers who service rental companies and end users who require immediate replacements for damaged tires. Dealers stock finished assemblies for replacement parts and draw from this stock to replace tires on a real-time basis. Wheels are retrieved, inspected, and recirculated as needed. Tires are filled with an OEM-approved resin at an OTR facility, using a proven process so there is no chunking or air pockets which can lead to premature failure. Additionally, OTR has launched a portal to facilitate the end customer's ordering through the dealer/service provider, to provide a user-friendly, closed-loop solution.

SUPPLY CHAIN PROTECTION ISO-9001

The Customs-Trade Partnership Against Terrorism (C-TPAT) was created by U.S. Customs and Border Protection (CBP) as a voluntary program for companies that are involved in the global supply chain.

As a C-TPAT partner, we do our part to alleviate supply chain disruption and reduce border delays.



FREQUENTLY ASKED QUESTIONS ABOUT C-TPAT CERTIFICATION:

- **Why does this matter to me?**
Expedited port entry, more accurate delivery schedules, and protecting our borders. Being C-TPAT certified allows our shipping containers to bypass the security-related delays at the ports of entry. Our certification ensures that our supply chain is secure throughout; from the manufacturing facility, through the ports, and on to the final destination.
- **How much time can be saved by being C-TPAT certified?**
There are many factors involved, but the government estimates that non-certified shipments are 3.5 times more likely to be delayed by security inspection. Also, should a C-TPAT certified shipment be randomly chosen for inspection, it is given priority status and is moved to the front of the existing queue for inspection.
- **Is C-TPAT certified easy?**
Actually, it is a very comprehensive process that can take years to complete. There are a series of site visits throughout the supply chain, reference checks, paperwork, fees, and even a personal interview. C-TPAT certified companies must permanently adhere to strict policies in order to maintain certification.

ISO CERTIFICATION

The International Organization for Standardization (ISO) helps to set global standards of excellence for both quality and management systems. Certified companies must undergo rigorous inspections and evaluations to ensure that they adhere to the highest standards.

ISO BENEFITS:

- Consistent product quality.
- Standardized production and record keeping.
- Product dependability.
- Enhanced customer satisfaction.

CONTACT INFORMATION

OEM Inquiries: Contact your local OTR salesperson or email sales@otrwheel.com.

Aftermarket Inquiries: Contact your local OTR salesperson or call 800-833-6309 (east of the Mississippi River) or 888-455-4910 (west of the Mississippi).

Trans American Rubber Tubes, Flaps, or Accessories: Call 800-922-8823 for additional information.

WARRANTY INFORMATION

OTR provides limited warranty coverage for tires, wheels, tracks, and other items in the event of defects in workmanship. You may request a copy of our policy by emailing us at sales@otrwheel.com or visit: otrwheel.com/general-information-and-technical-support-training-warranty/

Note that OTR has designated select dealers and distributors to assist with warranty repairs. Contact OTR for more information.

CATALOG DISCLAIMER

Product specifications and information were correct as of the date of this catalog release, but are subject to change without notice or obligation. Every effort has been made to ensure the accuracy of this catalog. Consult with your salesperson if you wish to verify data is correct.

ISO 9001: 2015 CERTIFICATION

OTR facilities are ISO 9001: 2015 registered (except for new locations where certifications are in process). ISO ensures consistent product quality, standardization, documentation, and compliance with OEM requirements.

REACH COMPLIANCE

OTR's custom tires for OEMs can be designed with REACH compliance. Consult with your salesperson as needed.

A series of horizontal dotted lines spanning the width of the page, providing a template for writing or drawing.



Engineered Solutions

OTR's Commitment:

SOLUTIONS

OTR doesn't just sell tires and wheels, we diagnose problems and provide solutions.

VALUE

OTR optimizes ROI with high performance & value-added services to deliver results.

INNOVATION

OTR has a passion for innovating solutions that exceed customer expectations.

PARTNERSHIP

We're not just a vendor, we're a long-term partner who will support your business.

+1.800.833.6309

www.otrwheel.com



OTR is the operating unit of OTR International, Inc., comprising businesses located in the U.S., Canada, Europe, China, Thailand, and Sri Lanka. OTR is a partner company of Owner Resource Group (ORG), LLC.

© 2025 OTR International, Inc. All Rights Reserved. | C-US-V032825