

Material Handling Airless Tires



PRESS-ON BAND



SOLID RESILIENT

Material Handling Airless Tires

Forklifts, aerial work platforms, skid steers, pallet jacks ... we have airless tires for them all. Our solid press-on and solid resilient style tires are engineered to meet the most rigorous industrial applications. Featuring low abrasion, chunk-resistant rubber compounds and engineered multi-layer construction and profiles, our tires offer the ideal balance of long tire life, stability and rider comfort. This results in reduced equipment operating costs and more time to focus on your business.

→ High tensile strength

→ Reduced driver fatigue

→ Maximum comfort

→ Exceptional traction for long tire life

→ Reduced chipping and chunking

→ No scuff — *non-marking compound*



SOLID PRESS-ON TIRES

- Available in **smooth** and **traction** style tread
- Available in **black** and **non-marking** rubber



TIRE INFORMATION AND DIMENSIONS			COUNTER-BALANCED LIFT TRUCKS				OTHER VEHICLES
Tire Size	Overall Diameter	Section Width	Load Wheels Load Capacity		Steer Wheels Load Capacity		Load Capacity
			@6mph	@10mph	@6mph	@10mph	
	IN	IN	LBS	LBS	LBS	LBS	LBS
10 X 4 X 6-1/2	10.00	4.00	1,720	1,532	1,411	1,290	1,224
10 X 4-3/4 X 6-1/2	10.00	4.75	2,095	1,863	1,720	1,566	1,488
10 X 5 X 6-1/2	10.00	5.00	2,227	1,996	1,830	1,676	1,599
12 X 4-1/2 X 8	12.00	4.50	2,293	2,040	1,951	1,720	1,643
12 X 5-1/2 X 8	12.00	5.50	2,811	2,448	2,315	2,073	1,985
13-1/2 X 5-1/2 X 8	13.50	5.50	3,330	2,966	2,734	2,492	2,381
14 X 4-1/2 X 8	14.00	4.50	2,580	2,304	2,117	1,929	1,830
14 X 5 X 10	14.00	5.00	2,944	2,635	2,414	2,205	2,106
15 X 5 X 11-1/4	15.00	5.00	3,065	2,734	2,514	2,293	2,183
16 X 5 X 10-1/2	16.00	5.00	3,330	2,966	2,734	2,492	2,381
16 X 6 X 10-1/2	16.00	6.00	4,212	3,771	3,462	3,164	2,999
16 X 7 X 10-1/2	16.00	7.00	5,127	4,564	4,212	3,837	3,660
16 X 8.66 X 12	16.00	8.66	6,086	5,435	4,994	4,564	4,344
16-1/4 X 5 X 11-1/4	16.25	5.00	3,374	2,999	2,756	2,525	2,403
16-1/4 X 6 X 11-1/4	16.25	6.00	4,234	3,782	3,484	3,175	3,021
16-1/4 X 7 X 11-1/4	16.25	7.00	5,127	4,542	4,190	3,826	3,638
18 X 5 X 12-1/8	18.00	5.00	3,616	3,241	2,977	2,712	2,580
18 X 6 X 12-1/8	18.00	6.00	4,631	4,123	3,793	3,473	3,308
18 X 7 X 12-1/8	18.00	7.00	5,623	5,027	4,631	4,212	4,013
18 X 8 X 12-1/8	18.00	8.00	6,615	5,909	5,457	4,961	4,741
21 X 6 X 15	21.00	6.00	5,182	4,631	4,256	3,892	3,704
21 X 7 X 15	21.00	7.00	6,339	5,645	5,182	4,741	4,520
21 X 8 X 15	21.00	8.00	7,442	6,670	6,119	5,601	5,347
21 X 9 X 15	21.00	9.00	8,600	7,662	7,056	6,439	6,119
22 X 8 X 16	22.00	8.00	7,718	6,902	6,339	5,788	5,513
22 X 9 X 16	22.00	9.00	8,930	7,938	7,332	6,670	6,339
22 X 10 X 16	22.00	10.00	10,088	8,996	8,269	7,552	7,166
22 X 12 X 16	22.00	12.00	12,403	11,091	10,198	9,316	8,875
28 X 12 X 22	28.00	12.00	14,862	13,274	12,216	11,157	10,628

Material Handling Airless Tires



SOLID PRESS-ON TIRE PART NUMBERS

Tire Size	Black Smooth Part Number	Non-Marking Smooth Part Number	Black Traction Part Number	Non-Marking Traction Part Number
10 X 4 X 6-1/2	TS25610465	TS25610465NM	TS25710465	TS25710465NM
10 X 4-3/4 X 6-1/2	TS2561047565	TS2561047565NM	TS2571047565	TS2571047565NM
10 X 5 X 6-1/2	TS25610565	TS25610565NM	TS25710565	TS25710565NM
12 X 4-1/2 X 8	TS25612458	TS25612458NM	TS25712458	TS25712458NM
12 X 5-1/2 X 8	TS25612558	TS25612558NM	TS25712558	TS25712558NM
13-1/2 X 5-1/2 X 8	TS256135558	TS256135558NM	TS257135558	TS257135558NM
14 X 4-1/2 X 8	TS25614458	TS25614458NM	TS25714458	TS25714458NM
14 X 5 X 10	TS25614510	TS25614510NM	TS25714510	TS25714510NM
15 X 5 X 11-1/4	TS2561551125	TS2561551125NM	TS2571551125	TS2571551125NM
16 X 5 X 10-1/2	TS256165105	TS256165105NM	TS257165105	TS257165105NM
16 X 6 X 10-1/2	TS256166105	TS256166105NM	TS257166105	TS257166105NM
16 X 7 X 10-1/2	TS256167105	TS256167105NM	TS257167105	TS257167105NM
16 X 8.66 X 12	TS2561686612	TS2561686612NM	TS2571686612	TS2571686612NM
16-1/4 X 5 X 11-1/4	TS256162551125	TS256162551125NM	TS257162551125	TS257162551125NM
16-1/4 X 6 X 11-1/4	TS256166105	TS256162561125NM	TS257162561125	TS257162561125NM
16-1/4 X 7 X 11-1/4	TS256162571125	TS256162571125NM	TS257162571125	TS257162571125NM
18 X 5 X 12-1/8	TS25618512125	TS25618512125NM	TS25718512125	TS25718512125NM
18 X 6 X 12-1/8	TS25618612125	TS25618612125NM	TS25718612125	TS25718612125NM
18 X 7 X 12-1/8	TS25618712125	TS25618712125NM	TS25718712125	TS25718712125NM
18 X 8 X 12-1/8	TS25618812125	TS25618812125NM	TS25718812125	TS25718812125NM
21 X 6 X 15	TS25621715	TS25621715NM	TS25721715	TS25721715NM
21 X 7 X 15	TS25621615	TS25621615NM	TS25721615	TS25721615NM
21 X 8 X 15	TS25621815	TS25621815NM	TS25721815	TS25721815NM
21 X 9 X 15	TS25621915	TS25621915NM	TS25721915	TS25721915NM
22 X 8 X 16	TS25622816	TS256228165NM	TS25722816	TS25722816NM
22 X 9 X 16	TS25622916	TS256229165NM	TS25722916	TS25722916NM
22 X 10 X 16	TS256221016	TS2562210165NM	TS257221016	TS257221016NM
22 X 12 X 16	TS256221216	TS2562212165NM	TS257221216	TS257221216NM
28 X 12 X 22	TS256281222	TS256281222NM	TS257281222	TS257281222NM



SOLID RESILIENT TIRES

- Available in *smooth* and *traction* style tread
- Available in *black* and *non-marking* rubber



TIRE INFORMATION AND DIMENSIONS					COUNTER-BALANCED LIFT TRUCKS		OTHER VEHICLES		
Tire Size	Overall Diameter	Section Width	Max Overall Width	Rim Size	Load Wheel Load Capacity	Steer Wheel Load Capacity	Load Capacity		
							@16mph	@6mph	@4mph
	IN	IN	IN	IN	LBS	LBS	LBS	LBS	LBS
4.00 X 8	16.1	3.7	4.5	3.00D - 8	2,094	1,609	1,609	1,896	2,094
140/55 - 9	14.9	4.2	5.0	4.00E - 9	2,579	1,984	1,984	2,337	2,579
5.00 X 8	18.0	3.9	4.8	3.00D - 8	3,120	2,403	2,403	2,833	3,120
5.00 X 8	18.0	3.9	4.8	3.25I - 8	3,120	2,403	2,403	2,833	3,120
15 X 4 1/2 - 8	15.0	3.5	4.2	3.00D - 8	2,293	1,764	1,764	2,083	2,293
16 X 6 - 8	16.5	4.7	5.6	4.33R - 8	3,296	2,535	2,535	2,998	3,296
18 X 7 - 8	17.8	5.0	6.1	4.33R - 8	4,729	3,638	3,638	4,288	4,729
6.00 - 9	20.8	4.3	5.5	4.00E - 09	4,156	3,197	3,197	3,770	4,156
21 X 8 - 9	20.7	6.0	7.2	6.00E - 09	6,074	4,674	4,674	5,512	6,074
6.50 X 10	22.7	5.1	6.3	5.00F - 10	5,159	3,968	3,968	4,685	5,159
200/50 - 10	18.0	6.1	7.3	6.50F - 10	5,445	4,189	4,189	4,938	5,445
23 X 9 - 10	23.1	6.5	7.8	6.50F - 10	7,595	5,842	5,842	6,889	7,595
7.00 X 12	25.7	5.4	6.9	5.00S - 12	6,437	4,938	4,938	5,831	6,437
7.00 X 15	28.4	5.5	7.0	5.5 - 15	7,815	6,008	6,008	7,088	7,815
27 X 10 - 12	26.4	8.0	9.4	8.00G - 12	8,598	6,614	6,614	7,804	8,598
28 X 9 - 15	26.9	7.4	8.6	7.00 - 15	8,598	6,614	6,614	7,804	8,598
28 X 12.5 - 15	28.0	10.6	11.6	9.75 - 15	12,181	9,370	9,370	11,056	12,181
250 - 15	28.4	7.2	8.7	7.00 - 15	10,461	8,047	8,047	9,502	10,461
250 - 15	28.4	7.2	8.7	7.50 - 15	10,461	8,047	8,047	9,502	10,461
8.25 X 15	32.3	6.4	8.1	6.5 - 15	10,472	8,047	8,047	9,480	10,472
300 X 15	32.2	8.4	10.0	8.00 - 15	12,897	9,921	9,921	11,706	12,897
23 X 10 - 12	22.9	8.1	9.4	8.00G - 12	8,311	6,393	6,393	7,540	8,311
10.00 X 20	40.2	9.9	11.2	8.0 - 20	13,228	11,023	11,023	12,015	13,228

Material Handling Airless Tires

SOLID RESILIENT TIRE PART NUMBERS

Tire Size	Black Smooth Part Number	Black Clip Rock Part Number	Standard Non-Marking Part Number	Non-Marking Clip Lock Part Number
4.00 X 8	TS2554008	TSL2554008	TS2554008NM	TSL2554008NM
140/55 - 9	TS255140559	TSL255140559	TS255140559NM	TSL255140559NM
5.00 X 8	TS25550083008	TSL25550083008	TS25550083008NM	TSL25550083008NM
5.00 X 8	TS25550083258	TSL25550083258	TS25550083258NM	TSL25550083258NM
15 X 4 1/2 - 8	TS25515458	TSL25515458	TS25515458NM	TSL25515458NM
16 X 6 - 8	TS2551668	TSL2551668	TS2551668NM	TSL2551668NM
18 X 7 - 8	TS2551878	TSL2551878	TS2551878NM	TSL2551878NM
6.00 - 9	TS2556009	TSL2556009	TS2556009NM	TSL2556009NM
21 X 8 - 9	TS2552189	TSL2552189	TS2552189NM	TSL2552189NM
6.50 X 10	TS25565010	TSL25565010	TS25565010NM	TSL25565010NM
200/50 - 10	TS2552005010	TSL2552005010	TS2552005010NM	TSL2552005010NM
23 X 9 - 10	TS25523910	TSL25523910	TS25523910NM	TSL25523910NM
7.00 X 12	TS25570012	TSL25570012	TS25570012NM	TSL25570012NM
7.00 X 15	TS25570015	TSL25570015	TS25570015NM	TSL25570015NM
27 X 10 - 12	TS255271012	TSL255271012	TS255271012NM	TSL255271012NM
28 X 9 - 15	TS25528915	TSL25528915	TS25528915NM	TSL25528915NM
28 X 12.5 - 15	TS2552812515	TSL2552812515	TS2552812515NM	TSL2552812515NM
250 - 15	TS255250157	TSL255250157	TS255250157NM	TSL255250157NM
250 - 15	TS2552501575	TSL2552501575	TS2552501575NM	TSL2552501575NM
8.25 X 15	TS25582515	TSL25582515	TS25582515NM	TSL25582515NM
300 X 15	TS25530015	TSL25530015	TS25530015NM	TSL25530015NM
23 X 10 - 12	TS255231012	TSL255231012	TS255231012NM	TSL255231012NM
10.00 X 20	TS2551000208		TS2551000208NM	



A series of horizontal dotted lines spanning the width of the page, providing a template for writing or data entry.

Material Handling **Notes**

A series of horizontal dotted lines for writing notes.



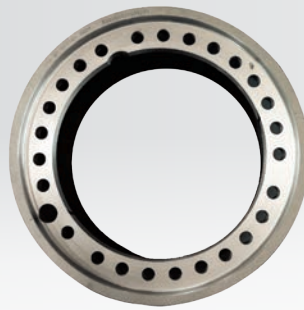
TIRES | WHEELS | ASSEMBLIES | TUBES | BALLAST | TRACKS

OTR Engineered Solutions

OTR Engineered Solutions (OTR) is a market-leading global enterprise specializing in off-the-road terrain engaging solutions for original equipment manufacturers (OEMs) and aftermarkets. OTR also provides value-added services such as warehousing, tire mounting, and sequencing. Core markets include Construction, Lawn & Garden, Powersports, Agriculture, Forestry, Mining, Material Handling, and Specialty Vehicles.



**TIRE/WHEEL
EXCHANGE PROGRAM**



**WHEEL INSPECTION/
RECERTIFICATION**



FLAT PROOFING
-TyrLynr® -TyrFil360™

+1.800.833.6309
www.otrwheel.com

OTR is the operating unit of OTR International, Inc., comprising businesses located in the U.S., Canada, Europe, China, Thailand and Sri Lanka. OTR is a partner company of Owner Resource Group (ORG), LLC.

© 2024 OTR International, Inc. All Rights Reserved. | B-NA-V012224