



Wheel Engineering

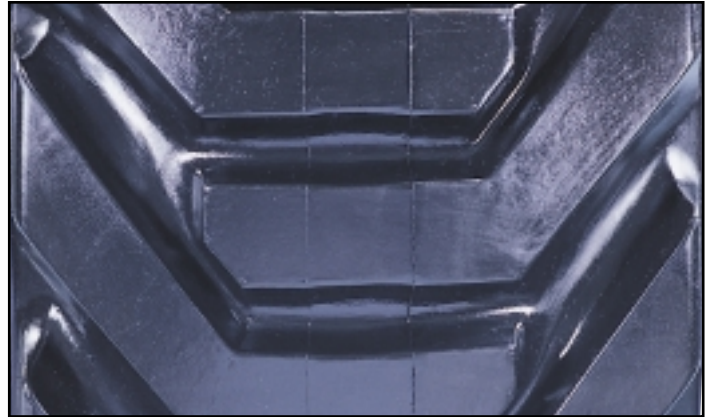
# OUTRIGGER



Introducing the New Premium in Directional  
Skid-Steer, Aerial Lift, and Backhoe Tires

# OTR OUTRIGGER

## SKID-STEER, AERIAL LIFT, AND BACKHOE TIRES



### OUTRIGGER SPECIFICATIONS

TIRE SIZE	PLY RATING	MAX PSI	OD	SW	RIM	TREAD DEPTH
10X16.5 NHS	10	80	31.06	10.94	8.25	24/32
12X16.5 NHS	12	80	34.4	12.8	9.75	26/32
33X15.5-16.5 NHS	12	90	33.77	15.86	12	43/64
14X17.5 NHS	14	75	35.97	13.70	10.5	23/32
IN385/65D19.5 (15-19.5)	16	95	39.375	15.06	11.75	26/32
IN445/55D19.5 (18-19.5)	16	85	40.0	16.56	13	26/32
IN385/65D22.5 (15-22.5)	18	110	42.38	15.25	12.25	26/32
IN445/65D22.5 (18-22.5)	18	115	45.5	17.25	13	29/32

- State of the Art, Self Cleaning, Directional Tread
- Rim Guard and Extra Heavy Duty Sidewall
- Flat Profile Allows More Surface Contact and Longer Tread Life
- Innovative Design for Improved Stability
- Reinforced Bead Area
- Available with Tyrliner!
- "Made in USA"